

Panama

Van Halen

Advanced

drummer-tube.com

♩ = 141

Hi Hat

Ride

L/R Crash

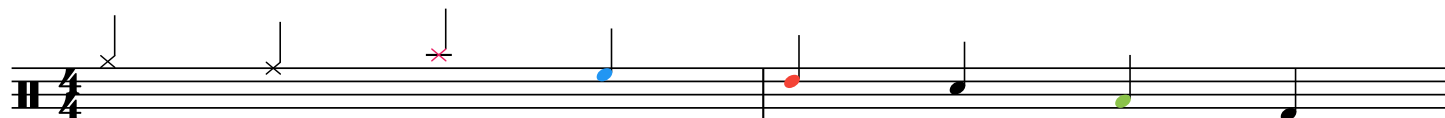
L.Tom

R.Tom

Snare

F. Tom

Kick



Intro



o o



o +



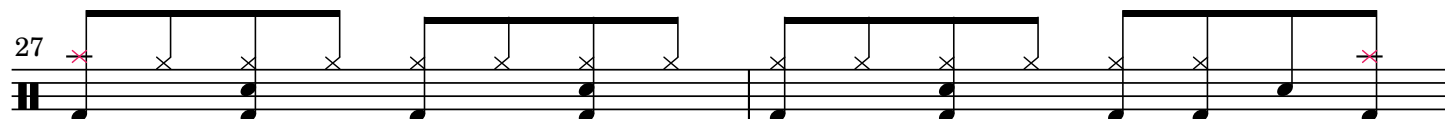
o o o o o o o o o o o o o o o o o o o o



o o



o +



Verse 1



o o o o o o o o o o



Pre-Chorus 1

Measures 37-40: Four measures of eighth-note chords (G2, B1, D2) with a descending eighth-note line (E4, D4, C4, B3, A3, G3, F3, E3) in the right hand. Measure 40 ends with a double bar line and a repeat sign.

Measures 41-44: Four measures of eighth-note chords (G2, B1, D2) with a descending eighth-note line (E4, D4, C4, B3, A3, G3, F3, E3) in the right hand. Measure 44 ends with a double bar line and a repeat sign.

Chorus 1

Measures 45-48: Four measures of eighth-note chords (G2, B1, D2) with a descending eighth-note line (E4, D4, C4, B3, A3, G3, F3, E3) in the right hand. Measure 48 ends with a double bar line and a repeat sign.

Measures 49-52: Four measures of eighth-note chords (G2, B1, D2) with a descending eighth-note line (E4, D4, C4, B3, A3, G3, F3, E3) in the right hand. Measure 52 ends with a double bar line and a repeat sign.

Verse 2

Measures 53-56: Four measures of eighth-note chords (G2, B1, D2) with a descending eighth-note line (E4, D4, C4, B3, A3, G3, F3, E3) in the right hand. Measure 56 ends with a double bar line and a repeat sign.

Measures 57-60: Four measures of eighth-note chords (G2, B1, D2) with a descending eighth-note line (E4, D4, C4, B3, A3, G3, F3, E3) in the right hand. Measure 60 ends with a double bar line and a repeat sign.

Pre-Chorus 2

Measures 61-64: Four measures of eighth-note chords (G2, B1, D2) with a descending eighth-note line (E4, D4, C4, B3, A3, G3, F3, E3) in the right hand. Measure 64 ends with a double bar line and a repeat sign.

Measures 65-68: Four measures of eighth-note chords (G2, B1, D2) with a descending eighth-note line (E4, D4, C4, B3, A3, G3, F3, E3) in the right hand. Measure 68 ends with a double bar line and a repeat sign.

Chorus 2

Measures 69-72: Four measures of eighth-note chords (G2, B1, D2) with a descending eighth-note line (E4, D4, C4, B3, A3, G3, F3, E3) in the right hand. Measure 72 ends with a double bar line and a repeat sign.

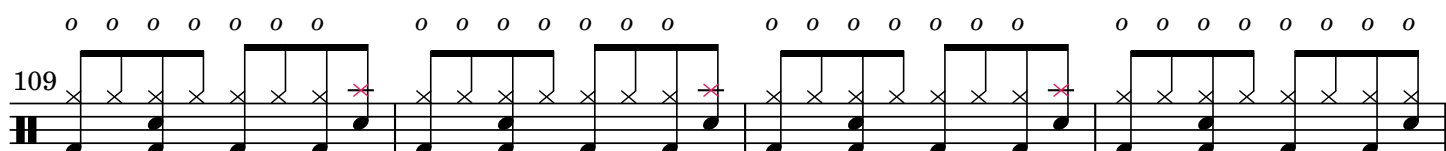
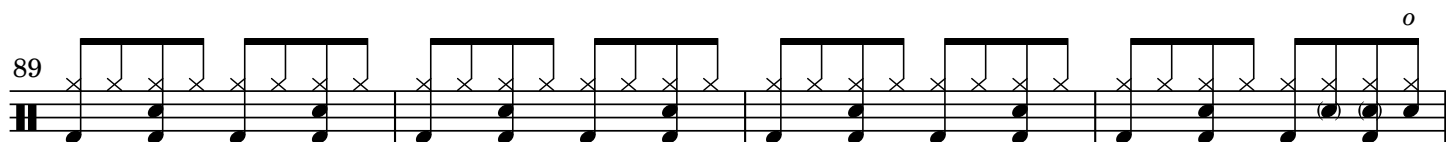
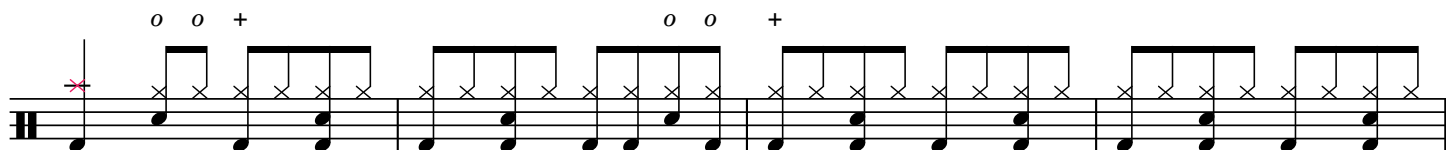
Measures 73-76: Four measures of eighth-note chords (G2, B1, D2) with a descending eighth-note line (E4, D4, C4, B3, A3, G3, F3, E3) in the right hand. Measure 76 ends with a double bar line and a repeat sign.

Guitar Solo

Measures 77-80: Four measures of eighth-note chords (G2, B1, D2) with a descending eighth-note line (E4, D4, C4, B3, A3, G3, F3, E3) in the right hand. Measure 80 ends with a double bar line and a repeat sign.



Bridge



Chorus 3

